



Sello Roxtec TB con manguito SL TB

Sello de entrada redondo para un solo cable o tubería en estructuras perimetrales de tanques de acero.

El Roxtec TB (tank boundary) con SL TB es un sello redondo con un manguito de acero para un solo cable o tubería. El sello de entrada se compone de dos mitades con capas de caucho retirables, con lo que se puede adaptar a cables y tuberías de diferentes tamaños. Los accesorios frontales garantizan el anclaje mecánico en el manguito. El manguito SL TB se suelda a la estructura.

- Rápido y sencillo de instalar
- Se adapta a cables y tuberías de diferentes tamaños



Características del producto



Calificación contra incendios



Estanco al agua



Estanco a gases

Estructura de instalación



Metal

Tipo de montaje



Soldadura

Calificaciones y certificados

Fuego

- CLASE A de acuerdo al estándar FTP IMO 2010

Estanquidad

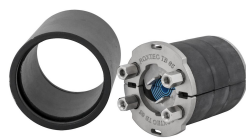
- Gas: 2 bar (catastrófico) / 1,2 bar (perímetro del tanque)
- Agua: 11 bar (catastrófico) / 6,6 bar (perímetro del tanque)

Datos de los componentes de sellado

Componentes de sellado



Lubricante Roxtec



Kit TB

Para obtener información detallada, visite [roxtec.com](https://www.roxtec.com).



Kits de sellos preconfigurados

mm/kg



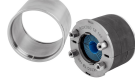
TB 65 KIT AISI316
WOC/PRIMED



TB 65 KIT AISI316
WOC/AISI316



TB 105 KIT AISI316
WOC/PRIMED



TB 105 KIT AISI316
WOC/AISI316

Título	Configuración	Dimensiones de abertura Ø	Peso	N.º de art.
TB 65 KIT AISI316 WOC/PRIMED	1x (8.0-30.0)	80 - 82	1.6	184905
TB 65 KIT AISI316 WOC/AISI316	1x (8.0-30.0)	80 - 82	1.6	196482
TB 105 KIT AISI316 WOC/PRIMED	1x (24.0-54.0)	120 - 122	2.8	200102
TB 105 KIT AISI316 WOC/AISI316	1x (24.0-54.0)	120 - 122	2.9	200103

The product information provided by Roxtec does not release the purchaser of the Roxtec system, or part thereof, from the obligation to independently determine the suitability of the products for the intended process, installation and/or use. Roxtec gives no guarantee for the Roxtec system or any part thereof and assumes no liability for any loss or damage whatsoever, whether direct, indirect, consequential, loss of profit or otherwise, occurred or caused by the Roxtec systems or installations containing components not manufactured by an authorized manufacturer and/or occurred or caused by the use of the Roxtec system in a manner or for an application other than for which the Roxtec system was designed or intended. Roxtec expressly excludes any implied warranties of merchantability and fitness for a particular purpose and all other express or implied representations and warranties provided by statute or common law. User determines suitability of the Roxtec system for intended use and assumes all risk and liability in connection therewith. In no event shall Roxtec be liable for indirect, consequential, punitive, special, exemplary or incidental damages or losses. The Roxtec products are offered and sold in accordance with the conditions of the Roxtec General Terms of Sales. The latest version of the Roxtec General Terms of Sales can be downloaded from <https://www.roxtec.com/en/about-us/about-roxtec/general-terms-of-sales/> We reserve the right to make changes to the product and technical information without further notice. Any errors in print or entry are no claims for indemnity. The content of this publication is the property of Roxtec International AB and is protected by copyright. This document was generated on: 2024-04-30